

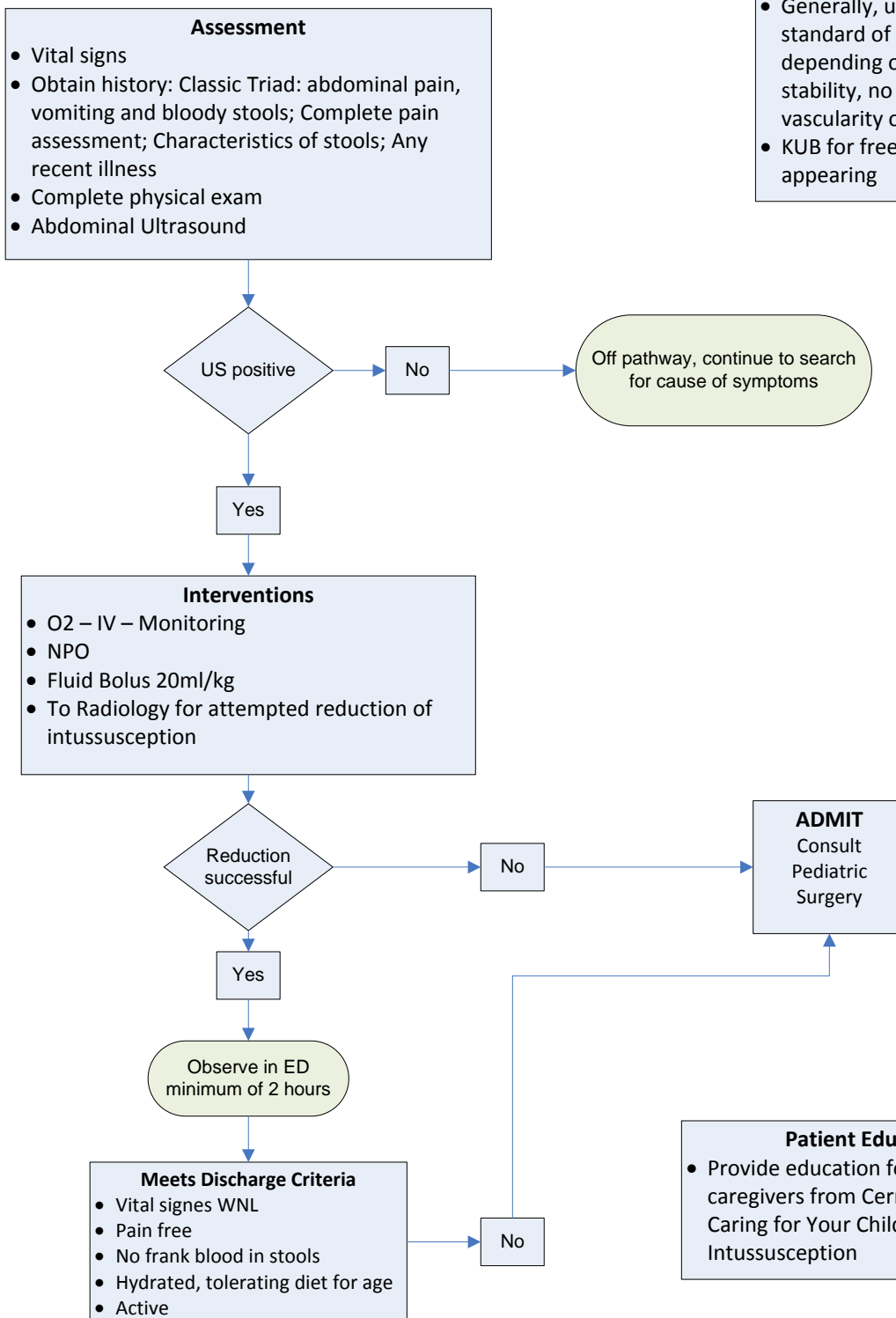
# Emergency Department Intussusception Care Guideline



**Inclusion Criteria:** 3mo-3yrs with most common 9mo-2yrs, with no underlying disease or comorbidity  
**Exclusion Criteria:** Free air noted on x-ray, concern for tumor, intestinal necrosis, clinically unstable

## Recommendations/ Considerations

- There is an 8%-10% chance of recurrence, with 80%-90% of those being within the first 24 hours after reduction
- Generally, up to 3 reductions is standard of practice in the US, depending on the patient's stability, no ascites and good vascularity on the US.
- KUB for free air if patient is ill appearing



## References

### Intussusception

ACR-SPR Practice Parameter for the performance of pediatric fluoroscopic contrast enema exams. Rev. 2016.

Gluckman S, Karpelowsky J, et al. Management for intussusception in children (review). Cochrane Database of Systematic Reviews 2017, Issue 6. Art. No.: CD006476. DOI: 10.1002/14651858.CD006476.pub3.

Gray MP, Shun-Hwa L, et al. Recurrence rates after intussusception enema reduction: a meta-analysis. Pediatrics 2013. doi:10.1542/peds.2013-3102

Otero HJ, White AM, et al. Imaging Intussusception in Children's Hospitals in the United States: Trends, Outcomes, and Costs. Journal of the American College of Radiology. April 2019.  
<https://doi.org/10.1016/j.jacr.2019.04.011>