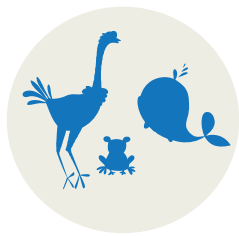


THANK YOU FOR SUPPORTING OUR AUTISM CARE AT CHOC CHILDREN'S



RECENTLY, WE BROKE GROUND ON THE THOMPSON AUTISM CENTER.
WE LOOK AHEAD TO THE AMAZING THINGS THAT WILL
HAPPEN BECAUSE OF SUPPORT LIKE YOURS.

TOGETHER, WE ARE...



CREATING A TRANQUIL ENVIRONMENT

For the Center's design, we considered how color, images, noise and lighting affect children who have an autism spectrum disorder. With the help of experts in the field, we are developing an optimal visual environment that integrates soothing and engaging artwork. Features will include animals that appear in a nurturing or non-threatening relationship with one another, positively channeling children's attention and reducing negative emotions.



LEVERAGING DONOR COLLABORATION

We are proud to share that donors who have experience in dealing with autism are eager for CHOC to expand its role. One supporter has advocated for additional services related to attention-deficit/hyperactivity disorder; another hopes CHOC can facilitate patient transitional care; and a third wants CHOC to be a convener of autism-related providers with the goal of establishing a more accessible and cohesive network of services in Orange County. We are grateful to have such an engaged community of supporters with valuable insights that are directly informing our plans for the Center.



SETTING THE STANDARD

There is a lack of data around designing optimal healthcare environments for autism patients. As such, the majority of our evidence-based design work relied on personal interviews with doctors, researchers, parents and families. With their insights, we've created a broad range of services for acute behaviors, toilet training, adaptive behavior analysis therapy, education, as well as patient modules for assessment, consultation and clinical evaluation. This has resulted in a breakthrough project that can instruct the design of future facilities.



YOUR SUPPORT HELPS US RECRUIT EXCEPTIONAL LEADERS

Dr. Jonathan Megerian is a neurology specialist and will serve as the Center's medical director. He has expertise in leading pediatric neurology departments, expanding research efforts and developing high-level clinical programs.

Matthew Lazari is the Center's executive director. He comes to CHOC from Children's Hospital Los Angeles, where he served as the vice president of operations. Matthew is proud to be the parent of a teen who is on the spectrum.