



## DEAR FRIENDS,

CHOC Children's doesn't operate alone. Our success is due to a community of stakeholders who together support our organization in countless ways. From our outstanding associates, medical staff and boards of directors to our tremendous donors, patients and families, every single individual makes an enormous impact.

Why has CHOC attracted such a loyal and enthusiastic community of support, both within our walls and throughout the region and even nationwide? We devoted the 2017 Annual Report to finding out.

Our goal with the Annual Report theme "Through the eyes of..." was to discover how a variety of individuals—and even a therapy dog—view CHOC. How has CHOC touched them? What motivates them to become deeply involved in the organization? Every story sheds light on what makes CHOC truly inspiring.

All of this, of course, leads me to reflect on how I view CHOC. Without a doubt, 2016-2017 has been a tremendous year. There are so many highlights—from opening our new, private-room neonatal intensive care unit in July, to pediatric orthopaedic surgeon Dr. Afshin Aminian being awarded \$1 million from CHOC Children's Foundation's innovative Philanthropic Venture Funding Program, to continued progress on building our mental health inpatient center.

Through my eyes, I see a selfless community ready to go the distance to advance pediatric care. This includes the thousands of walkers who participated in last year's CHOC Walk in the Park, presented by *Disneyland*<sup>®</sup> Resort, donating close to \$3.2 million, to the volunteers who spend hours upon hours improving the lives of patients and families.

I see CHOC Children's Network—a health system that includes 1,500 pediatric primary care and specialty providers in the region—deliver seamless, quality care to patients. And I see an active Board of Directors and Foundation work together to raise crucial funds, design innovative projects and ensure that children, adolescents and young adults receive the highest quality care in a compassionate, pediatric-centered environment.

I see our precious patients battle diseases day in and day out, supported by a tremendous team of physicians, nurses and associates who are devoted to the health of young people. I feel the energy every day I walk through the doors; the energy of diverse people coming together for a common goal.

Through my eyes, I see a bright future for CHOC Children's as we continue on our path of excellence in clinical care, innovative research and training the next generation of medical professionals. I am excited for what the next few years will bring.



Kimberly Chavalas Cripe  
President and Chief Executive Officer  
CHOC Children's



## THROUGH THE EYES OF A PATIENT: FINDING FUN, FRIENDS AND SUPPORT DURING A RIGOROUS CANCER TREATMENT REGIMEN

Imagine one day you are enjoying a carefree life as a college student, with your biggest worry revolving around your next midterm. And then, in a split second, you find yourself hospitalized for an aggressive cancer—torn from your friends, your normal routine, your studies.

In November 2016, this scenario became a reality for Angeliki Pelehrinis, then a 19-year-old junior studying biology at the University of California, Santa Barbara.

“My symptoms started as an intense itching all over my body that later became incredibly painful,” Angeliki recalls. “I suffered for three months while nobody could determine the cause of the itching. Then overnight, a Ping-Pong ball-sized lump appeared on my chest.”

A trip to the emergency room and a biopsy resulted in a diagnosis of aggressive Hodgkin’s lymphoma. Angeliki’s pediatrician recommended CHOC Children’s, which treats cancer patients up to 26 years of age.

Over the course of eight months, Angeliki endured four rounds of intensive chemotherapy, two rounds of less intensive chemotherapy, and 14 days of radiation. She was hospitalized several times, and experienced multiple side effects including debilitating pain and nausea.

One of Angeliki’s life-changing moments during treatment was her involvement with CHOC Children’s Adolescent and Young Adult (AYA) cancer program, which is facilitated by specialists from the Cheresse Mari Laulhere Child Life Department.

“The program is made up of patients who are also going through cancer treatment. We are so comfortable with one another and find great strength together as we experience ups and downs,” she explains. “This is so important because I never felt alone.”

AYA activities include picnics, painting classes, bonfires and the AYA prom. “We choose our prom dress and jewelry, and the guys wear tuxes. We have our makeup done and for one magical night we feel glamorous. It’s an amazing evening,” says Angeliki.

Other memorable moments of Angeliki’s CHOC experience include meeting Taboo from The Black Eyed Peas in Seacrest Studios, receiving a visit from the Anaheim Ducks, and spending her birthday in her hospital room decorated like a winter wonderland, complete with gifts from the nurses and a party with food brought in for her family.

In June 2017, Angeliki was declared cancer free, and has since returned to school in Santa Barbara. But through the AYA program, she remains closely connected to CHOC. “I will be mentoring newly diagnosed patients, sharing my experience. We will be starting a Big Patient Little Patient Program, writing notes of encouragement to each other,” promises Angeliki.

“I can’t imagine going through my cancer treatment without the support of CHOC and the AYA program,” she adds. “Even through the rough times, I’ve had a lot of fun experiences.”





## THROUGH THE EYES OF A PARENT: A MOTHER'S 19-YEAR JOURNEY TO KEEP HER SON HEALTHY, PHYSICALLY AND MENTALLY

Giselle M. Bailey's 19-year relationship with CHOC Children's began shortly after the birth of her third child, Gavyn. Her baby boy underwent surgery for kidney failure two hours after being born, and was then transported to CHOC's neonatal intensive care unit (NICU).

For almost three years, Giselle would drive Gavyn to CHOC twice a week for blood work—with his older siblings tagging along. "Gavyn was too young for a transplant, and the goal was to maintain him until he got older and a kidney could be found," Giselle recalls. "CHOC became a huge part of our routine."

Miraculously, just before Gavyn's third birthday, a perfectly matched cadaver kidney from an adult donor in Albany, N.Y., became available. Giselle's little boy was rushed to UCLA for the transplant—and thus began the second phase of their journey with CHOC... keeping Gavyn healthy post-transplant. "CHOC has been such an integral part of our lives," Giselle says. "They are like family."

It's been a tough, challenging journey for Giselle and Gavyn. Gavyn must take a slew of medications to keep his body from rejecting the kidney (he spent nine weeks at UCLA after one bout of rejection five years ago). "The drugs are nasty, and cause a range of problems including thickening of his heart muscle, necrosis of his hip, horrible GI issues and multiple bacterial infections," she says, "not to mention fighting with insurance nonstop to cover the medications."

What Giselle did not see coming, and what threw this strong mother for a curve, was the deep depression Gavyn experienced going through the medical turmoil. His struggles have included self-medicating and self-harming, all in an attempt to cope with the pain and challenges of his chronic condition.

"Unfortunately, while CHOC was supportive, inpatient pediatric mental health services were non-existent in Orange County. This is why Gavyn and I were so heartened to hear of CHOC's recent Mental Health Initiative, which includes the creation of inpatient pediatric mental health beds," Giselle says. Giselle and Gavyn were so enthusiastic that they have become spokespeople for CHOC's initiative, and Gavyn has served as a CHOC ambassador.

In addition to speaking about his journey, Gavyn shares his music—both at CHOC events and in concerts across the globe. An accomplished guitarist and vocalist, Gavyn has toured the world playing to audiences enthralled with his message of love, identity and adulthood. His songwriting skills captured the attention of Warner/Chappell Music, which offered a publishing deal to Gavyn to write songs for the label.

"I hope that young people who face challenges like mine will continue to connect with my music," Gavyn says. "The ability to inspire others motivates me as a songwriter."

For Giselle, it has been a long journey, and she is grateful for the support from CHOC. "I still talk to Dr. Antonio Arrieta, Gavyn's pediatric infectious disease specialist, to this day. He gave me his cell number and helped guide Gavyn's medical care. CHOC has made an incredible impact on our lives."





## **THROUGH THE EYES OF A NURSE: BUILDING STRONG BONDS WITH BABIES, FAMILIES AND FELLOW STAFF**

On July 18, 2017, after years of planning, CHOC Children's opened an advanced, family-centered 36-bed neonatal intensive care unit (NICU).

In the unit, you will find specially designed private rooms, each with a bassinet, a chair that allows the mother to recline while nursing, a sofa that converts into a bed, locked cabinet, television with a DVR for baby education and privacy curtains.

You will also find Jessie T. McCoy, RN, BSN, and her fellow NICU nurses, devoting their skills and their hearts to caring for these premature infants and worried parents. It's the only place Jessie could ever imagine spending her 12-hour days.

"Originally, I had wanted to be an elementary school teacher because I have always liked working with children," Jessie says. "But midway through college I visited my aunt in Texas, and spent an entire shift with her at the NICU where she worked. It was at that moment I knew I was meant to be a NICU nurse."

After earning her degree and doing various nursing jobs, Jessie received the call she had been waiting for from CHOC—a nursing position in the NICU. She joined the hospital in 2015, and the last two years have been "extraordinary."

Jessie explains, "I never knew what an impact these babies could have on your life. They are strong, and are fighters, and you never want to give up."

Since Jessie can request caring for the same baby during each of her three weekly 12-hour shifts, she inevitably becomes close to the infants and their families. "It gives us a chance to really get to know the parents, and to help educate them about how to take care of their babies," Jessie points out. "We also organize activities such as movie nights for the siblings as well, so they become part of the experience."

Jessie says what really makes CHOC's NICU special is how the nursing staff, unit staff and volunteers are like a second family. They are a close-knit group that supports each other and cares for each other day in and day out.

One of Jessie's most rewarding experiences is watching babies who have been in the NICU finally get to go home. "When I think of the journey these babies take, from being born prematurely to becoming ready for discharge, I realize how fortunate I am to be able to be closely involved in their care. It is truly inspiring to watch a baby born at 25 weeks grow and thrive, and then return a year later with his or her family to say hello," Jessie says.

"I am blessed to get to live my dream at CHOC Children's."







## THROUGH THE EYES OF A COMMUNITY PEDIATRICIAN: CHOC CHILDREN'S NETWORK HELPS ORANGE COUNTY DOCTORS DELIVER SEAMLESS CARE

Ever since he can remember, Eric H. Ball, MD, wanted to be a pediatrician. "I realized the longer you wait to intervene in patients' lives, the harder it is for them to change their habits," says Dr. Ball. "However, children are teachable. You can give them essential tools about healthy lifestyle choices and preventive care that will benefit them for the rest of their lives."

For the past 12 years, Dr. Ball has treated thousands of patients in his practice at Southern Orange County Pediatric Associates (SOCPA). "Most of what we do are check-ups, with a focus on raising happy, healthy, well-adjusted children," Dr. Ball says. "We spend a lot of time talking with parents about parenting, nutrition, vaccines, discipline, the importance of kids getting enough sleep and setting social media boundaries."

Occasionally, however, Dr. Ball sees a child with a serious disease, everything from cardiac and orthopaedic conditions to a diagnosis of epilepsy or cancer. Years ago, sending these patients to different specialists often proved challenging because there was no way to directly communicate with the many health professionals and specialists involved. This, in turn, sometimes led to disjointed care for patients, including duplicate or unnecessary testing, and inefficiencies.

With the creation of the CHOC Children's Network—a health system of close to 1,500 pediatric primary care providers and specialists in Southern California designed to provide seamless care to patients—treating children with complex illnesses has become more coordinated and responsive.

"In my practice, we needed to have a partner to unify our health care system," explains Dr. Ball. "CHOC Children's was our logical partner." In spring 2018, CHOC Children's Network will launch an upgraded electronic medical record (EMR) system that will allow community-based pediatricians and specialists, along with CHOC's physicians and allied health professionals, to use one electronic chart.

"This new EMR system will lead to more efficiencies with patients, decreased unnecessary testing and improved communication between physicians," Dr. Ball says. "Aligning with CHOC is a huge step in becoming a modern health system fully integrated from top to bottom."

The system will also facilitate the collection of population health data, which provide physicians throughout Orange County with best practices information to help deliver scientific, evidence-based medical care. The network currently focuses on creating best practice guidelines for six conditions: asthma, bronchiolitis, community-acquired pneumonia, headaches, acute gastroenteritis and acne.

"I love watching the kids grow up in my practice," says Dr. Ball. "I feel so fortunate that I get to play a role in their lives. And I like that the CHOC Children's Network is helping primary care pediatricians throughout the county deliver excellent, evidence-based care. It is a partnership that benefits the entire community."





## THROUGH THE EYES OF A RESEARCHER: A MILLION DOLLAR IDEA AIMS TO HELP CHILDREN WITH MOVEMENT CHALLENGES

Pediatric orthopaedic surgeon and researcher Afshin Aminian, MD, is driven by one goal: to “give children with movement challenges a life without limits.”

Dr. Aminian sees patients with a wide array of conditions, from rare genetic disorders and neuromuscular diseases to scoliosis and fractures. All have one challenge in common: problems with simple movement in their daily activities. “We know every one of these young patients has a dream—to be up and out on the playing field, running around and having fun with their peers,” says Dr. Aminian.

Dr. Aminian recalls a 6-year-old patient with severe cerebral palsy whose deformities were corrected with surgeries and intensive post-operative rehabilitation. She told him, “I thought I was a ship stuck in a sand dune, and now I have water under my sails.” Yet by high school, she had lost some of the gains she had made, leaving her with severe limitations in movement—and Dr. Aminian became more determined than ever to help these children with movement challenges.

Dr. Aminian’s quest for an innovative answer led him to team up with Chapman University’s Schmid College of Science and Technology and Crean College of Health and Behavioral Sciences to develop a transformational research initiative. They designed a research project that would involve placing wearable sensors on patients with movement challenges to collect data that will eventually, with the aid of artificial intelligence and computer learning, lead to improved outcomes. “We are hoping to design the new generation of smart, wearable customized orthoses that will help maintain their gains in the future,” Dr. Aminian explains.

In July 2017, this innovative concept earned Dr. Aminian and his Chapman University team a \$1 million award from the CHOC Foundation’s new Philanthropic Venture Funding Program. Following a competitive proposal and presentation review process at CHOC that attracted 27 submissions, the CHOC’s Orthopaedic Institute team led by Dr. Aminian emerged victorious from eight finalists.

Dr. Aminian and the team subsequently attracted an additional \$1 million grant from the OM Foundation, that matched the CHOC Foundation prize. “We look forward to working with the engineers and computer scientists at Chapman, alongside CHOC physical therapists and orthopaedic specialists, to provide this unique care under one roof,” he said.

Another one of Dr. Aminian’s research passions that closely aligns with his clinical work is improving the care of children with scoliosis—creating ways to fix the deformity while allowing the spine to grow.

“We completed a study in a porcine model that allowed the growth of the spine while the deformity was corrected, and presented these findings at the International Congress on Early Onset Scoliosis international meeting in the Netherlands in November 2016,” Dr. Aminian says.

“Advancing this concept will take a huge effort, including working with the U.S. Food and Drug Administration to receive approval for human trials,” Dr. Aminian says. “We are very encouraged with these results. Our ultimate goal with all of this research is to get kids with movement challenges off the sidelines and active again.”





## THROUGH THE EYES OF A DONOR: A TRUE HEART FOR CHILDREN LEADS TO A \$5 MILLION GIFT

Cherese Mari Laulhere had a great love of adventure and a huge heart for children. Both passions were on display throughout a study abroad program named "Semester at Sea" in 1996 when the 21-year-old UCLA student visited such exotic locales as Venezuela, Brazil, South Africa and Kenya. At every stop, Cherese made connections with local children, and each experience touched her heart.



Cherese was especially moved by a visit to an orphanage in Kenya. Chris Laulhere, Cherese's mother, recalls, "At the orphanage, Cherese met a little girl, who had a twin brother, both adorable. She was tall and thin, wearing a green and red-striped dress and a smile that melted Cherese's heart. Cherese said it was incredible to have these kids clinging onto you trying to get some love and affection. It broke her heart to have to leave these beautiful children at the orphanage."



After these encounters, Cherese desired to open up an orphanage in the United States. She had already identified some land with a friend she met on board the ship, and started making plans. Yet these plans would never be realized. On March 27, 1996, her life was tragically taken in a bus accident in Agra, India.

The world would never be the same for Cherese's mother, Chris; father, Larry; or older brother, Todd. In the face of this devastating loss, they were determined to both keep Cherese's memory alive and fulfill her wishes to make a difference in the lives of children. In 1996, the family established the Cherese Mari Laulhere Foundation, and in the ensuing years has donated millions of dollars to different entities to enrich and better the lives of children, adults and families through education, cultural and performing arts, and health care.



In December 2016, in their ongoing efforts to fulfill Cherese's dreams and vision, Chris, Larry, Todd and his wife, Tere, through the Cherese Mari Laulhere Foundation, donated \$5 million to CHOC's Child Life Department. According to Chris and Larry, the family-centered mission of the department completely aligns with Cherese's dreams for helping children in need.

"The Child Life Department plays a special role at CHOC," Chris says. "It helps ease the stress of hospitalization through a wide variety of programs, including pre-surgical support so that medical equipment and procedures are less scary, and sibling support."

Chris adds that the department's pet therapy, music therapy and art therapy programs are especially close to Cherese's passions. "Cherese was a dancer through high school. And she loved animals so much that in 10th grade, she became a vegetarian," Chris says. "And she also got involved in a volunteer program where she would take pets for veterinary care when their owners were too sick to do so."

With the \$5 million donation, the newly named Cherese Mari Laulhere Child Life Department at CHOC will continue transforming the hospital experience for patients and families, supporting the vital programs that play crucial roles in patients' healing and recovery.

"Cherese always sought to do better, to aim higher and to make the world a better place," Larry says. "Cherese's gift to CHOC helps to continue fulfilling her vision." Adds Chris, "While the children she touches through this donation will never have the chance to meet Cherese, we hope they will get to know her heart and soul through the work of her Foundation."

**For more information about Cherese, please visit [www.cherese.org](http://www.cherese.org).**

CHERESE MARI LAULHERE  
CHILD LIFE DEPARTMENT



## THROUGH THE EYES OF A PET THERAPY DOG: BRINGING SMILES AND SUNSHINE WHEREVER SHE GOES

Let me take a moment to introduce myself. I am an active volunteer at CHOC Children's, both at the main campus in Orange and at the CHOC Children's Corona Health Center. And even though I dress up in a tutu, never leave the house without one of my many sets of Minnie Mouse ears and wear incredibly sparkly nail polish, I take my job very seriously.

My name is Savvy, I am 7 years old and I am a proud pet therapy dog.

I am a Hungarian Vizsla, a breed that scores high on the traits of friendliness, trainability and energy. And believe me, my high energy level comes in handy: when I volunteer at CHOC's main campus, I visit several different outpatient settings in a day. These include the outpatient infusion center, pre-op and post-op units, rehabilitation department and all of the first floor general clinics.

I love the young patients and I have to admit, they love me too. I do all sorts of tricks—crowd favorites include showing off my yoga "downward dog" position, and rolling over and over on the ground while letting out some hilarious grunts.

And my trading cards are in big demand. Each of the CHOC therapy dogs, and they number more than 40, has a trading card featuring a picture and pertinent information. My trading card is a classic, with a photo of me all dressed up shaking hands with Minnie Mouse herself.

My handler/mom, Kelly Rang, says I am a ham for attention, and I think I enjoy it more than the kids. But I know that the patients, and staff, appreciate my antics. In fact, the Pet Therapy Program, which is a component of the Cheresse Mari Laulhere Child Life Department at CHOC Children's, does a lot of good.

Pet therapy dogs help minimize the stress and anxiety of hospitalization and illness, provide warmth, comfort and the sense of familiarity, offer play and "normal life" experiences, provide a distraction from pain and medical treatments, and of course, bring smiles.

Before I could volunteer, Kelly spent hours and hours training me. I was so good that I passed the rigorous requirements of Pet Partners, a national organization that works with CHOC's pet therapy program. Now I get to see my CHOC friends once a week, alternating weeks between Corona and the main campus.

I am also grateful for the \$5 million donation from the Cheresse Mari Laulhere Foundation to the Child Life Department. I know Cheresse loved animals just like me, and the generous donation from her Foundation allows for the expansion of the Child Life Department.

Well, gotta run. Kelly and I need to get ready for our upcoming visit to CHOC. Some great kids and staff members are waiting to say hello.







## THROUGH THE EYES OF A VOLUNTEER: CHOC FOLLIES MEMBER'S PHILANTHROPIC JOURNEY REFLECTS HER HEART FOR CHILDREN

When the curtain rose on the 20th Anniversary CHOC Follies production, "CHOC Around The Clock," in spring 2017, Lauren Karg Johnston took to the stage and did what she had done for 17 continuous years: perform her heart out to raise money for the CHOC Children's Foundation.

"Children are our future and it is so important to have every child be the healthiest he or she can be," Lauren says. "CHOC Children's is dedicated to helping children thrive and succeed, regardless of their ability to pay, and it is vital that we support this mission."

Over the past two decades, the CHOC Follies has been one of Orange County's most popular fundraising events, featuring a cast and crew of more than 100 enthusiastic community members singing and dancing in professionally choreographed shows. The annual event has raised over \$9 million since it first began.

Lauren successfully auditioned for her first Follies as soon as she turned 21. It was the perfect fit: In her childhood, she performed throughout Orange County in Opera Pacific's "La Boheme," "Turandot" and "A Masked Ball," and South Coast Repertory's "A Christmas Carol"; graced the stage with the Kirov Ballet; and performed in the Western states with TKO-The Technical Knock Outs.

In the past 17 years, Lauren graduated from Chapman University; became a National Board Certified Teacher in the Orange Unified School District, where she received Teacher of the Year accolades in 2010; got married; and had two sons. And she never missed one Follies performance. She was involved in the Follies two weeks after giving birth to her now 5-year-old son, and performed at 3½ months pregnant with her now 2-year-old son.

While every Follies has been special, the highlight for Lauren was her opportunity to dance with Dick Van Dyke in the 2004 Follies "Blast Through the Past." Lauren recalls, "I will never forget that moment when we were dancing arm-in-arm on stage and I could see the twinkle in his eye. It was magical."

The CHOC Follies gives Lauren and her fellow volunteers the opportunity to see firsthand the results of their fundraising efforts. "During the rehearsals, we get to meet some of the patients and parents who talk about their experiences at CHOC, and also listen to the physicians share their accomplishments," Lauren says. "It really brings home why we are doing what we do."

Lauren was so inspired by the CHOC Foundation's mission that for the past five years she has also been involved with the CHOC Glass Slipper Guild, serving as Vice President, Ways and Means.

"I am so glad I got my foot in the door 17 years ago as a senior in college and had the opportunity to give back to the children in our community," Lauren says. "Every day I do something for CHOC, and I look forward to continuing to grow in my philanthropic journey."





## DEAR FRIENDS,

The CHOC Children's Foundation just completed an unparalleled year of fundraising success and innovative initiatives, continuing a tradition of compassion and caring that defines all who support CHOC Children's mission. Without a doubt, this extraordinary success is due in large part to a vibrant community of donors who understand and support CHOC's mission of providing excellence in clinical care, research and training.



A culture of philanthropy runs deep at CHOC. For a vivid example, you need look no further than 9-year-old Jordin Jackson, who, along with her dedicated family, made it their mission to single-handedly improve care for patients with sickle cell disease. When just 3 years old, Jordin was admitted to CHOC for complications due to her painful and life-threatening condition. With technology constraints at the time, her specialized laboratory tests had to be analyzed offsite, resulting in stressful delays waiting for results. Determined to resolve this problem, Jordin's mother, Karen, recruited family and friends to raise \$32,000 to purchase the sickle cell testing equipment needed to provide results faster, greatly improving the clinical experience for these patients and their families. On August 27, 2017 Jordin fulfilled a personal dream to serve as the CHOC Walk in the Park Ambassador, beautifully representing the unique stories of thousands of participants who have a deep personal attachment to CHOC.

The past year was a record setting one for our community-based fundraising, showcasing the tremendous generosity of the CHOC community. The Gala raised \$5.2 million, the largest ever in Orange County, and the CHOC Follies celebrated its 20th season by raising more than \$1.2 million secured to support CHOC's mission.

The Cheresse Mari Laulhere Foundation donated \$5 million to the CHOC Child Life Department, which has been named the Cheresse Mari Laulhere Child Life Department. According to Chris and Larry Laulhere, the family-centered mission of the department eloquently aligns with their late daughter's dreams for helping children in need.

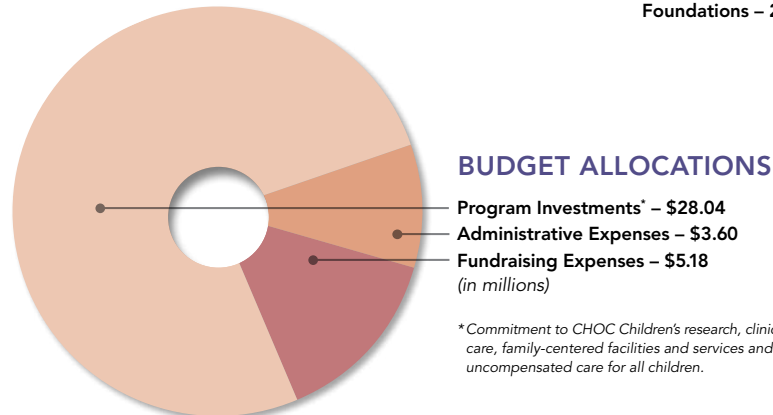
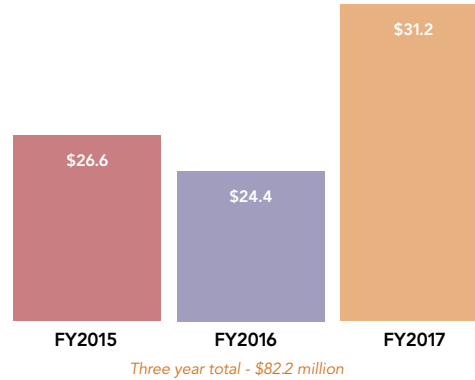
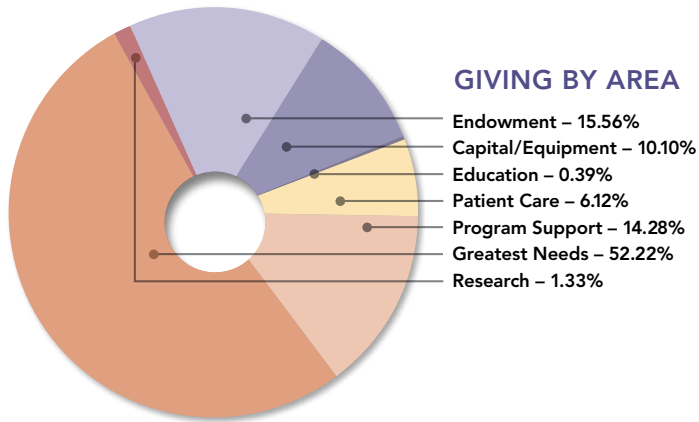
Fundraising efforts also supported the CHOC Children's Foundation's new Philanthropic Venture Funding Program, for which the Foundation was nominated for the Orange County Business Journal's Innovator of the Year award. CHOC orthopaedic surgeon Afshin Aminian, MD, and a team of researchers from Chapman University were awarded \$1 million to implement a series of novel research projects to address movement challenges in children. The first involves placing wearable sensors on patients to collect data that will eventually lead to the production of smart, wearable customized orthotics.

From our grassroots fundraising led by our Guilds and the partners and programs of Children's Miracle Network Hospitals, to record-setting signature events, to generous endowments for innovative programs and research, the CHOC Foundation is reinforcing a culture of philanthropy that continues to advance the care of children.

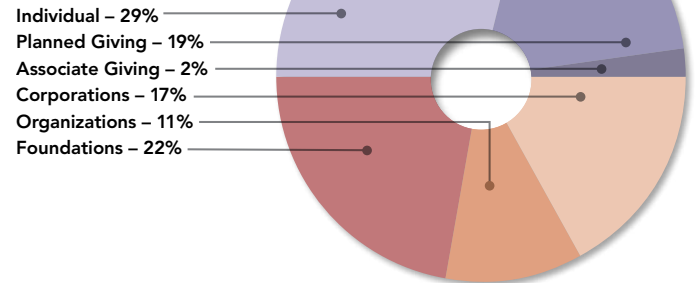
Thank you for your role in helping CHOC Children's vision become reality.

A handwritten signature in blue ink that reads "Dennis K. McClellan". The signature is fluid and cursive, with the first name being the most prominent.

Dennis K. McClellan  
Senior Vice President and Chief Development Officer  
CHOC Children's Foundation



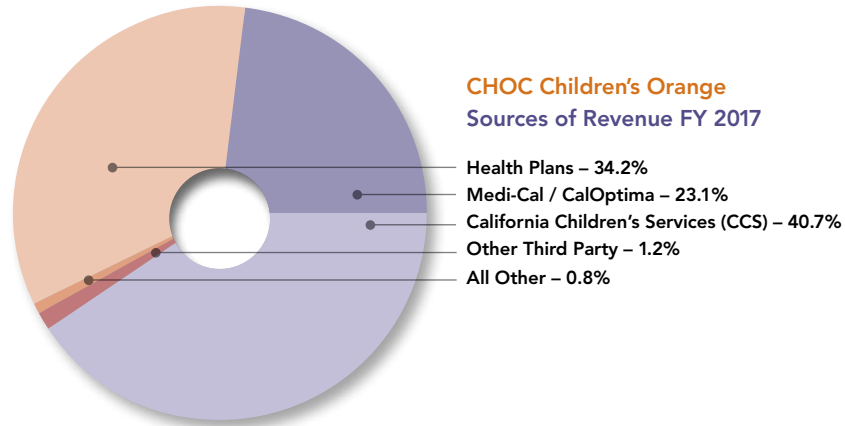
### GIVING BY SOURCE



\* Commitment to CHOC Children's research, clinical care, family-centered facilities and services and uncompensated care for all children.

## STATISTICAL REVIEW

For Fiscal Year Ending June 30, 2017



	2013	2014	2015	2016	2017
Total patient days	58,087	56,996	60,610	66,021	61,704
Total inpatient discharges	11,469	11,247	11,682	11,999	12,891
Average length of stay	5.1	5.1	5.2	5.5	4.8
Day Health Unit/Infusion Center visits	7,346	8,085	8,589	8,534	8,456
Inpatient surgeries	3,641	3,451	3,719	4,086	4,117
Outpatient surgeries	5,425	5,118	5,816	7,384	7,887
Emergency Room visits	52,338	56,136	75,336	81,257	89,791
Admissions via ER	5,581	5,592	6,371	6,976	7,545
Clinic visits - Primary Care and Specialty	349,115	351,469	355,986	384,781	538,702
Transports to CHOC	4,268	4,220	4,382	4,443	4,252
Pediatric capitated lives	122,570	134,796	146,119	153,965	151,818
Medical staff	611	628	633	648	652
CHOC full-time equivalent associates	2,220	2,509	2,254	2,408	2,531
Licensed beds	279	279	279	279	279

Source: Internal Records

<b>Assets:</b>	<i>As of June 30,</i>	<b>2015</b>	<b>2016</b>	<b>2017</b>
Current Assets				
Cash and short term investments	\$	143,898	\$ 151,081	\$ 248,148
Patient accounts receivable, net		97,522	105,573	104,125
Inventory		10,472	10,593	12,103
Other receivables		46,673	36,899	17,768
Other current assets		32,627	64,457	61,355
<b>Total current assets</b>		<b>331,192</b>	<b>368,603</b>	<b>443,499</b>
Assets whose use is limited		18,397	19,226	19,565
Property and equipment, net		656,677	636,725	632,946
Receivables long term		32,045	26,963	12,393
Other assets		8,670	8,593	5,826
<b>Total assets</b>		<b>\$1,046,981</b>	<b>\$ 1,060,110</b>	<b>\$ 1,114,229</b>
<b>Liabilities and Net Assets:</b>				
Current liabilities				
Current portion of long-term debt and capital lease obligation	\$	8,159	\$ 8,534	\$ 8,882
Accounts payable and accrued liabilities		61,587	74,754	91,121
Other current liabilities		6,501	10,308	14,361
<b>Total current liabilities</b>		<b>76,247</b>	<b>93,596</b>	<b>114,364</b>
Long-term debt and capital lease obligation		353,977	345,603	334,650
Derivative financial instruments		47,921	67,916	46,955
Other liabilities		16,145	15,901	15,630
<b>Total liabilities</b>		<b>494,290</b>	<b>523,016</b>	<b>511,599</b>
<b>Net assets:</b>				
Unrestricted		498,629	476,616	557,147
Temporarily restricted		53,376	59,792	44,797
Permanently restricted		686	686	686
<b>Total net assets</b>		<b>552,691</b>	<b>537,094</b>	<b>602,630</b>
<b>Total liabilities and net assets</b>		<b>\$1,046,981</b>	<b>\$1,060,110</b>	<b>\$ 1,114,229</b>

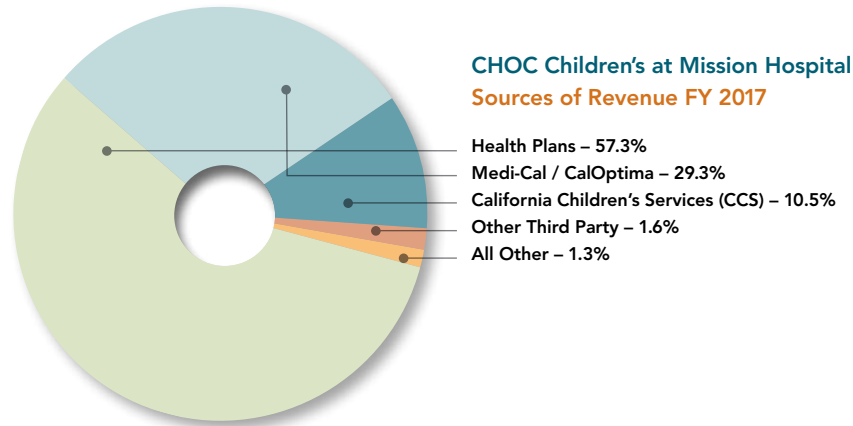
SUMMARY STATEMENT OF FINANCIAL POSITION (in thousands)

<b>Revenue:</b>	<i>For Fiscal Year Ending June 30,</i>		
	<b>2015</b>	<b>2016</b>	<b>2017</b>
Net patient service revenue	\$ 497,892	\$ 523,171	\$ 572,927
Premium revenue	48,028	55,855	62,377
Other revenue	50,054	61,619	67,621
Net assets released from restrictions used for operations	12,379	9,011	29,695
<b>Total operating revenue</b>	<b>608,803</b>	<b>649,656</b>	<b>732,620</b>
<b>Expenses:</b>			
Salaries, benefits, supplies and other	516,116	557,623	621,763
Interest expense	15,702	15,570	15,935
Depreciation and amortization	41,859	40,116	37,701
<b>Total operating expenses</b>	<b>573,677</b>	<b>613,309</b>	<b>675,399</b>
<b>Income (loss) from operations</b>	<b>35,126</b>	<b>36,347</b>	<b>57,221</b>
Nonoperating gains/losses	(14,987)	(25,829)	15,827
Revenues and gains in excess of (less than) expenses and losses	\$ 20,139	\$ 10,518	\$ 73,048
<b>Operating Margin</b>	<b>5.8%</b>	<b>5.6%</b>	<b>7.8%</b>
<b>Net Profit Margin</b>	<b>3.3%</b>	<b>1.6%</b>	<b>10.0%</b>
<i>Included in income from operations and revenues and gains in excess of expenses and losses is net provider fees of:</i>	\$ 60,402	\$ 35,324	\$ 45,335

SUMMARY STATEMENT OF OPERATIONS (in thousands)

## STATISTICAL REVIEW

For Fiscal Year Ending June 30, 2017



	2013	2014	2015	2016	2017
Total patient days	7,821	7,604	7,594	8,049	7,929
Total inpatient discharges	1,832	1,821	2,201	2,144	1,994
Average length of stay	4.3	4.2	3.5	3.8	4.0
Inpatient surgeries	311	305	294	269	256
Outpatient surgeries	354	441	337	346	415
Emergency Room visits	16,804	15,759	15,807	15,160	15,365
Medical staff	378	230	387	226	229
CCMH full-time equivalent associates	93	96	94	97	100
Licensed beds	54	54	54	54	54

Source: Internal Records



<b>Assets:</b>	<i>As of June 30,</i> <b>2015</b> <b>2016</b> <b>2016</b>		
Current Assets			
Cash and short term investments	\$ 10,431	\$ 10,874	\$ 11,701
Patient accounts receivable, net	10,695	14,892	11,187
Other receivables	41	17	1,134
Other current assets	3,208	3,623	2,372
<b>Total current assets</b>	<b>24,375</b>	<b>29,406</b>	<b>26,394</b>
Property and equipment, net	9,165	8,711	7,901
Receivables long term	78	20	10
Other assets	6,434	6,341	6,340
<b>Total assets</b>	<b>\$ 40,052</b>	<b>\$ 44,478</b>	<b>\$ 40,645</b>
<b>Liabilities and Net Assets:</b>			
Current liabilities			
Accounts payable and accrued liabilities	\$ 2,433	\$ 2,296	\$ 1,699
Other current liabilities	5,496	3,962	5,286
<b>Total current liabilities</b>	<b>7,929</b>	<b>6,258</b>	<b>6,985</b>
Other liabilities	143	121	119
<b>Total liabilities</b>	<b>8,072</b>	<b>6,379</b>	<b>7,104</b>
<b>Net assets:</b>			
Unrestricted	31,049	37,116	32,551
Temporarily restricted	931	983	990
<b>Total net assets</b>	<b>31,980</b>	<b>38,099</b>	<b>33,541</b>
<b>Total liabilities and net assets</b>	<b>40,052</b>	<b>44,478</b>	<b>40,645</b>

SUMMARY STATEMENT OF FINANCIAL POSITION (in thousands)

<b>Revenue:</b>	<i>For Fiscal Year Ending June 30,</i> <b>2015</b> <b>2016</b> <b>2017</b>		
Net patient service revenue	\$ 56,470	\$ 61,200	\$ 67,386
Other revenue	434	412	128
Net assets released from restrictions used for operations	120	100	125
<b>Total operating revenue</b>	<b>57,024</b>	<b>61,712</b>	<b>67,639</b>
<b>Expenses:</b>			
Salaries, benefits, supplies and other	50,256	52,306	53,338
Depreciation and amortization	1,012	1,105	1,149
<b>Total operating expenses</b>	<b>51,268</b>	<b>53,411</b>	<b>54,487</b>
<b>Income from operations</b>	<b>5,756</b>	<b>8,301</b>	<b>13,152</b>
Nonoperating gains	125	211	233
Revenues and gains in excess of expenses and losses	\$ 5,881	\$ 8,512	\$ 13,385
<b>Operating Margin</b>	<b>10.1%</b>	<b>13.5%</b>	<b>19.4%</b>
<b>Net Profit Margin</b>	<b>10.3%</b>	<b>13.8%</b>	<b>19.8%</b>
 <i>Included in income from operations and revenues and gains in excess of expenses and losses is net provider fees of:</i>	 \$ 3,170	 \$ 1,827	 \$ 2,931

SUMMARY STATEMENT OF OPERATIONS (in thousands)

## DONORS

### MIRACLE MAKERS

Donors who have made a cumulative gift of \$1,000,000 and above.

Anonymous (2)  
The Argyros Family Foundation ♥♥  
Estate of Margaret Rose Armstrong  
Blue Cross of California  
Blue Shield of California Foundation  
Estate of Louise Bowman  
BP West Coast Products, LLC  
CHOC Children's Volunteers  
CHOC Padrinos  
Cinderella Guild  
Cisco Systems  
Costco Wholesale Members,  
Employees & Vendors  
The Crean Foundation ♥♥  
Credit Unions for Kids  
Sandy Segerstrom Daniels ♥♥  
Dhont Family Foundation ♥♥  
Disneyland® Resort  
Estate of Walter D. Douglas II  
Anaheim Ducks  
Estate of Mary W. Flippen  
Carl Campbell ♥  
Jean M. Fox  
The Orange County Register/Freedom  
Communications, Inc.  
Fry Family Foundation ♥♥  
Glass Slipper Guild  
Robert E. Harke and Mary R. Harke Family  
The HealthCare Foundation For  
Orange County  
Nora and Charles Hester  
The Hoag Foundation  
Hoag Memorial Hospital Presbyterian  
Bill Holmes ♥♥  
Sophie and Lars Holmquist  
Hyundai Hope on Wheels  
The James Irvine Foundation  
Jack & Jill Guild  
Howard A. and Shirley V. Jones  
Family Foundation  
Lauren N. Kear  
The Shannon and Amy Ko Foundation ♥  
Kohl's Cares

Lamp Lighter Guild  
The Chereese Mari Lulhere Foundation ♥♥  
Robert M. and Diana Leaverton Family  
Henrietta and Harold Lee  
Josie Y.S. Lee ♥♥  
Little Mermaid Guild  
Littlest Angel Guild  
Los Ninos Guild  
The Sharon D. Lund Foundation ♥♥  
Mad Hatter Guild  
Kathryn T. McCarty  
Mother Goose Guild  
Muhonen Family ♥  
P.A.D.R.E. Foundation  
Pediatric Cancer Research Foundation  
Pediatric Subspecialty Faculty, Inc.  
Queen of Hearts Guild  
Rite Aid Corporation  
The Walden W. and Jean Young Shaw  
Foundation ♥♥  
Small World Guild  
South Coast Air Quality Management District  
Margaret Lorraine Sprague  
Harry and Grace Steele Foundation  
Mark and Dinah Stevens ♥♥  
Jim and Susan Swenson ♥♥  
Estate of Luther E. Swink  
Estate of Robert L. Tidwell  
Tres Osos Guild  
UniHealth Foundation  
United Way of Orange County  
Walmart Stores and Sam's Club Associates  
and Members  
Weingart Foundation  
West Coast University

### CIRCLE OF HEROES

Donors who have made a cumulative gift of \$100,000 - \$999,999.

Anonymous (17)  
Ace Hardware  
Terry and Leslie Adams  
Mr. Gilbert Aguirre  
Estate of Audrey I. Akeson  
The Allergan Foundation  
Ally Bank

A-Med Health Care  
Dr. and Mrs. Nick G. Anas ♥  
Angels Baseball Foundation  
Annenberg Foundation  
Sgt. Mark Antonowitsch Foundation ♥  
Maryann and Ray Ardanaz  
Asthma & Allergy Foundation of America  
Hugh M. Atchley  
Ayres Hotels  
Marilyn and Don Bailey  
Estate of Marjorie A. Ball  
The Bandai Foundation  
Bank of America  
Elwood & Shirley Banning Trust  
Barney & Barney, LLC  
Mary Lee and William H. Beck  
Tom Beeghly  
Estate of Arthur Benn  
Bergelectric Charitable Foundation  
Mr. and Mrs. Richard Berteau  
Mr. and Mrs. Michael T. Birney  
Helen E. Black  
Blizzard Entertainment  
Employees Community Fund of  
Boeing California  
Estate of Peter Bonderoff  
Estate of Dorothy M. Booth  
Mr. and Mrs. Thomas N. Braly  
Christine Bren, PsyD  
Broadcom Corporation  
Esther V. Bruggere  
Mr. and Mrs. Timothy Buckley ♥  
George Burgess  
Audrey S. Burnand  
Alice and Maurice Burns  
California Health Facilities  
Financing Authority  
The California Wellness Foundation  
California/Nevada Credit Union League  
Donald W. Callender Family Trust  
CalOptima  
Paul and Diana Camaur ♥  
Mr. and Mrs. Larry D. Cancellieri ♥  
The Capital Group Companies  
Charitable Foundation  
Estate of John D. Cashman  
Carol A. and Louis P. Castellana

Estate of John and Carol Cazier  
Center for the Study of Social Policy  
Anthony C. Chang, MD, MBA, MPH ♥  
Change a Life Foundation  
Chevron Corporation  
Chick-fil-A at North Orange FSU  
Chico's FAS, Inc  
CHOC Medical Staff  
CHOC Kids' Cards  
Jerry Clark  
Estate of Jean C. Cleary  
The Coalition of Orange County  
Community Clinics  
Coast Iron & Steel Co  
Dolores and Claude Cohn  
Commercial Capital Bank  
Community Foundation  
Michael J. Connell Foundation  
Conzelman Family Trust  
Mr. and Mrs. Leo W. Cook  
CO-OP Financial Services  
Estate of Faith A. Corey  
Estate of Ruth Coryell  
The C.M. and Edna Peyton Cotton  
Family Foundation  
County of Orange Health Care Agency  
Estate of Maryetta S. Craig  
Mr. and Mrs. Michael Craig  
Credit Union of Southern California  
Kimberly and Glenn Cripe ♥  
CU Direct  
Mr. John F. Custance  
Cystic Fibrosis Foundation  
Dancers Against Cancer  
Janet Davidson and Richard Plat ♥  
Mr. and Mrs. Glenn Dellimore ♥  
Deloitte & Touche, LLP  
Estate of Joan G. DeMarais  
DevTo Foundation ♥  
Larry and Kim Dickson  
DLE Equipment, Inc ♥  
Down Syndrome Association of  
Orange County  
Maureen C. Downes, MD ♥  
Tracey and John Duden ♥  
May A. Dudley  
Eagle Community Credit Union

Eastwood Insurance Services  
 Edison International Employee  
 Contributions Campaign  
 The Edwards Lifesciences Fund  
 The Eisner Foundation  
 The Elghanayan Family ♥  
 Guitty and Mahmood Khayami  
 EMSOC-Emergency Medicine Specialists  
 of Orange County ♥  
 Kelly and David Emmes  
 Estate of Margaret L. Emrick  
 Bob and Mary Jane Engman ♥  
 Entravision Communications  
 Estate of Evan Evans  
 Experian  
 Extra Life  
 Mrs. Sarah Faber  
 Sandy Fainbarg  
 Fairchild Martindale Foundation  
 Financial Partners Credit Union  
 Fire Safety First  
 First Interstate Bank  
 The Fluor Foundation  
 Roy Ford  
 The Louis W. Foster & Gladyce Foster  
 Family Foundation  
 Karen and Gary Frailing  
 Estate of Corinne Franklin  
 Mrs. Marilyn J. French  
 Irene and Jack Frost  
 Monica & Chris Furman ♥  
 Mr. and Mrs. Owen B. Garrett ♥  
 Anne and Kel Geddes  
 Gemini Resources and Marybelle and  
 Sebastian Paul Musco  
 Estate of Leslie Gilling  
 Estate of Marla S. Gitterman  
 Give Blood Play Hockey  
 GlaxoSmithKline  
 Jim and Sharon Goodwin ♥  
 gorjana & griffin, inc ♥  
 Bill and Chris Griffith ♥  
 Henry L. Guenther Foundation  
 Ms. Shirlee Guggenheim  
 Emile and Dina Haddad  
 O.L. Halsell Foundation  
 Estate of Adeline Halter

Trothy Lee Hamann  
 Estate of Helen George Harding  
 Mr. and Mrs. John Haretakis  
 Harry Winston  
 Evelyn McFarland Hayden Fund  
 Estate of Frances A. Haymond  
 Mr. and Mrs. Mark Headland  
 Heels 2 Heal, Orange County  
 Kathleen Hehn  
 Mr. John C. Herklotz ♥  
 Marilyn Hester Robbins and William Robbins  
 Dr. and Mrs. L. Kenneth Heuler  
 Mr. and Mrs. Alex N. Hilkevitch  
 George Hoag Family Foundation  
 Estate of Magdelene G. Hobson  
 Ms. Patricia A. Hofmann  
 American Honda Motor Co., Inc  
 Estate of Dora Hooker Adams  
 House of Imports  
 HUB International  
 Maxine Huber  
 Hughes Aircraft Company  
 Hughes Electronics  
 Judith and Robert Hultine  
 Richard C. and Virginia A. Hunsaker ♥  
 Wendell R. Hurlbut  
 Estate of Elmer Steward Hurt  
 IHOP Restaurants  
 IKARIA  
 The Irvine Company  
 Irvine Valley Air Conditioning, Inc  
 Herbert Isett Trust  
 Jay and Kelly Jacobs Family Charitable Fund  
 Janssen Pharmaceutica  
 Jazz Pharmaceuticals, Inc  
 Jeanette Berteia Hennings Foundation  
 The Jerome Foundation  
 Mr. and Mrs. Albert A. Johnson  
 Mark Chapin Johnson Foundation  
 Mac Cameron Jones  
 Yvonne and Damien Jordan ♥  
 W. M. Keck Foundation  
 Kent-Detwiler Unitrust  
 Kent-McKelvy Unitrust  
 Estate of Ernest Kessler  
 Kia Motors America  
 Kiewit Infrastructure Group

Estate of Elizabeth Jane Kincaid  
 The Karl Kirchgessner Foundation  
 Kiwanis International  
 The Lloyd E. and Elisabeth H. Klein  
 Family Foundation  
 Jenny and William Klein  
 Curtis A. & Varla E. N. Knauss  
 Virginia Knott Bender  
 Estate of Gayle Knowlden  
 Estate of Donald Kocher  
 Dean and Gerda Koontz Foundation  
 Estate of Mary Jo Kratz  
 Ralphs/Food 4 Less  
 Krystal Enterprises, Inc  
 Kwikset Corporation  
 Lance Armstrong Foundation  
 Mr. Wilfred L. Landis, II  
 The Gwen Lauhere Foundation  
 Mildred Lawless  
 Delphine Lee and Ron Ainsworth ♥  
 J2 Trust & KRL ♥  
 Legacy Foundation  
 The LeVecke Family Foundation ♥  
 Ms. Mimmie Lievens  
 Liferay Foundation ♥  
 The Linden Family Foundation  
 Little Red Wagon Guild  
 The Lockney Family Trust  
 Los Alamitos Charities Foundation  
 Estate of Dorothy F. Lytle  
 Heather and Jim Madden ♥  
 Doug and Debra Maniaci Family ♥  
 Estate of Camille H. Marcan  
 Marriott International  
 Marriott Vacation Club Newport Coast Villas  
 Masimo Americas, Inc  
 Masimo Foundation  
 Massiah Foundation, Inc ♥  
 Adrienne and Rick Matros ♥  
 Mr. and Mrs. Michael A. Maxsenti  
 Lillian B. May Charitable Remainder Unitrust  
 The McBeth Foundation  
 McCarthy Building Companies, Inc  
 Ronald McDonald House Charities of  
 Southern California  
 Stew & Vera McDonald Unitrust  
 Annie and Martin McDonald

Cindy & Ron McMackin  
 John and Roxie McQuade  
 Medtronic Philanthropy through  
 Medtronic Foundation  
 Miles Charitable Unitrust  
 Estate of Ruth Miller  
 Estate of Ruth E. Miller  
 Estate of Ronald Miller  
 Maria E. Minon, MD ♥  
 Miracles for Kids  
 Money Mailer, LLC  
 Darlene M. Moore  
 Moran, Rowen & Dorsey, Inc  
 Russell & Ruth Morgan Trust  
 Ruth Ann Eugene Moriarty  
 Mark D. Moses  
 Richard W. Movius ♥  
 Muhonen Family ♥  
 Sandy Munson  
 Mara and Keith Murray ♥  
 Dorothy Ruth Myers  
 Estate of Dagmar Nannfeldt  
 National Childhood Cancer Foundation  
 New Century Mortgage  
 The Nicholas Endowment  
 Nordstrom  
 The Kenneth T. and Eileen L. Norris Foundation  
 Orange County Community Foundation  
 Orange County's Credit Union  
 Louise Oresky Trust  
 Margaret E. Oser Foundation  
 Pacific Life Foundation  
 Panda Express  
 Estate of Donald Adrien Pelletier  
 Mr. & Mrs. Andy Peykoff ♥  
 George T. Pflieger Foundation  
 Shery and John Phelan ♥  
 The PIMCO Foundation  
 Estate of Dorothy Pinckney  
 PipeVine, Inc  
 Kristine L. Platten  
 The Robert and Helga Pralle  
 Family Foundation ♥  
 Estate of Ruth A. Pruitt  
 Punch & Judy Guild  
 Rapport Family Trust  
 RE/MAX Offices of Orange County

## DONORS

RE/MAX Tiffany Real Estate  
Debra Reed and Phyllis Schuffler  
Resource Management Services, Inc  
Ms. Mary T. Reuland  
Estate of Karen A. Richmond  
Ridings Family Trust  
Estate of Edna O. Rinde  
Riverside Community Health Foundation  
Rocking Horse Guild  
The Jim Rome Family  
Ronald McDonald House of Orange County  
Carmen and Tanya Rosborough  
Rothschild Family Foundation  
Dr. and Mrs. Marshall Rowen ♥  
Helen L. Russell  
Ruth Reich Trust  
Margorie B. Salfier  
Samueli Foundation ♥  
Schaller Anderson An Aetna Company  
Kerri and Andrew Schiller ♥  
SchoolsFirst Federal Credit Union  
Estate of O. Carl Schulz  
Estate of Catherine A. Scrafield  
Ryan Seacrest Foundation  
Seagull Golf Classic honoring Kaitlyn Santala  
Estate of Sam Joe Sears  
C.J. Segerstrom & Sons  
Ms. Sally E. Segerstrom ♥  
Ms. Donna L. Sharkey  
Estate of Martha Ilene Sheff-Schmehl  
Evelyn and David Simon ♥  
Slovene Rest Home Association  
Lon V. Smith Foundation  
Estate of Helen G. Smith  
Mr. James N. Smith  
Soccer for Hope  
Society For The Promotion of Japanese  
Animation/Anime Expo  
Estate of Halsey H. Soderberg  
Nancy Sommerville  
South Coast Plaza  
Southern California Building Funds  
Southern California Floor Covering Club  
Spectrum Brands, HHI  
Spirit Halloween  
Barbara and Charles Starns  
The Richard and Elizabeth Steele Fund ♥

Mr. and Mrs. Richard Stegemeier  
Ralph and Sue Stern and Family ♥  
David and Marni Sugden ♥  
Dorothy Grannis Sullivan Foundation  
Mr. and Mrs. Richard Symons ♥  
Taco Bell  
Taliun Tae Kwon Do  
The Taylor Family  
Tevora Business Solutions, Inc ♥  
Ms. Kathryn G. Thompson  
Harold and Joyce Thurber  
The Torch Relay  
Toyota Motor Sales, USA  
Edith and Alfred Trone  
Mary Adele Trudeau Estate  
Laura Tucker Unitrust  
Tustin Toyota  
Peter & Virginia Ueberroth  
Family Foundation ♥  
United Healthcare  
Estate of Helene Valle  
Mr. Griffin Ordway and Mrs. Yulia Vasilieva ♥  
Mr. and Mrs. Tom Vegh  
Estate of Clifford Vogel  
Walgreens  
Mrs. Jean L. Walsh  
Waltmar Foundation ♥  
Matthew Warren Fund  
John Wayne Cancer Foundation  
Marv and Patricia Weiss ♥  
Wells Fargo Foundation  
Fern M. Wessels Trust  
Estate of William Erick White  
Wieser Family Trust  
The Wilder Foundation  
The Hearst Foundations  
Estate of Arabella C. Williams  
Barbara Steele Williams  
Estate of Lucille L. Wilson  
Mr. and Mrs. Thomas A. Wolfe  
Carl E. Wynn Foundation  
Mr. and Mrs. David M. Yeager

## CIRCLE OF FRIENDS

Donors who have made a gift  
of \$10,000 - \$99,999 between  
July 1, 2016 and June 30, 2017.

Anonymous (1) ♥  
Allied Anesthesia Medical Group, Inc  
Mr. John Massa and Ms. Lisa Argyros  
Ms. Stephanie Argyros  
Association for Financial Professionals  
The Auriemmas ♥  
R.D. and Wendy C. Bailey ♥  
Bob and Ali Bartholomew ♥  
Mr. and Mrs. Medhat Bechay ♥  
Mr. and Mrs. Michael P. Beidleman ♥  
Berger North Foundation  
Mr. and Mrs. William D. Booth, Jr ♥  
Ms. Jennifer Bridwell ♥  
Mr. and Mrs. Sean Brown ♥  
Ms. Sylvia Burnett ♥  
TitanTHON at CSU Fullerton  
CashCall Mortgage  
Mr. and Mrs. Robert Caulfield ♥  
Drs. Michael and Elizabeth Chao ♥  
Child's Play  
Cigna Health and Life Insurance Company  
Mr. David R. Clare, Jr ♥  
Cla-Val  
Ms. Ann Colm ♥  
Cox Communications  
Mr. and Mrs. Paul Daftarian ♥  
Mr. and Mrs. Eric D. Day ♥  
Vijay Dhar, MD ♥  
Mr. and Mrs. Chris Dialynas ♥  
Mr. and Mrs. James Downey ♥  
Mr. and Mrs. Kurt Dunteman ♥  
Edrington Americas  
Dr. and Mrs. David Egger ♥  
Elderling Family Foundation ♥  
F. Gavina & Sons, Inc  
Bahman & Niloofar Fakhimi ♥  
Fatima Welfare Foundation ♥  
Mr. and Mrs. Tom Ferry ♥  
Mr. and Mrs. David Fischer ♥  
From Maddy's Closet  
From My Heart Endowment ♥  
Mr. John Fuhrman and Dr. Stephanie  
Ricci Fuhrman ♥

Hiroshi Fujishige Family Trust ♥  
Josefina S. Gaffoglio ♥  
Mr. and Mrs. Douglas Garn ♥  
Douglas George Invitational  
Mr. and Mrs. Matthew S. Gerlach ♥  
The Mush Foundation ♥  
The Gordon Foundation ♥  
Greenberg Traurig, LLP  
Ms. Madeline S. Hall ♥  
Mr. and Mrs. James Hallman ♥  
Mr. and Mrs. Chris Harder ♥  
Eric S. Hart and Family ♥  
Liz and Ryan Hawkins ♥  
Mr. Michael Hayde and Ms. Laura Khouri ♥  
HD Supply Construction & Industrial White Cap  
Ms. Kathryn M. Hennigan ♥  
Hester Family Foundation ♥  
The Hexberg Family Foundation ♥  
Hill Brothers Chemical Company ♥  
Mark and Susan Hillgren ♥  
The Hopkins Family ♥  
Mr. and Mrs. Jonathan L. Horne ♥  
Mr. Christopher Huber ♥  
Mr. Cary K. Hyden ♥  
Mr. and Mrs. Daniel H. Hyman ♥  
The Iacocca Family Foundation ♥  
Mr. Doug Ingram ♥  
Isidore C. & Penny W. Myers Foundation ♥  
Jasmine Star ♥  
Joe MacPherson Foundation, Inc ♥  
Gregg and Devon Kelly ♥  
Manny and Leyla Khoshbin ♥  
Kinecta Federal Credit Union  
The Kling Family Foundation ♥  
Dr. Douglas McConaughy and  
Dr. Gigi Kroll ♥  
Mr. and Mrs. Robert B. Kuppenheimer ♥  
Dr. and Mrs. James T. Kurtzman  
Mr. Noah Lands ♥  
Mr. and Mrs. Rick Lebrun ♥  
The Lenell Family ♥  
Inco-Check Inc and the family of Mr. and  
Mrs. John H. Lentz II ♥  
Mr. and Mrs. Tim LeVecke ♥  
Tim and Margaret Leyden ♥  
Mr. and Mrs. Cosmas Lykos  
Mallinckrodt Pharmaceuticals

Mrs. Rita J. Marchetti ♥  
 Mark Roberts Christmas Magic ♥  
 Marriott Daughters Foundation ♥  
 Ms. Eileen T. McClay ♥  
 Mr. Dennis K. McClellan and  
 Mr. Steven Deggendorf ♥  
 Mead Johnson Nutritionals  
 Mega Pallets, Inc ♥  
 Miles & Kelley Construction Co., Inc  
 Miller Environmental, Inc  
 Mr. and Mrs. Louis A. Miramontes ♥  
 Mission Hospital Foundation  
 Mr. and Mrs. Nolan T. Miyashiro ♥  
 Mr. and Mrs. Nader Moghaddam ♥  
 Mr. and Mrs. Manouch Moshayedi ♥  
 John and Sindy Murray ♥  
 Gemini Resources and Marybelle and  
 Sebastian Paul Musco ♥  
 Mr. Michael Nevell ♥  
 Del and Pat Newman ♥  
 Dr. Henry T. Nicholas, III ♥  
 OC Maternal Fetal Medicine ♥  
 Orange County Business Council  
 Oxnard Foundation  
 Pacific Premier Bank  
 Mrs. Joyce A. Palmer ♥  
 Mr. Saamil Parikh and Ms. Kayla Pope ♥  
 The Perlmutter Family ♥  
 Susie and Steve Perry ♥  
 PetSMART  
 Premier Healthcare Services  
 The David Pyle Family ♥  
 Mr. and Mrs. Mark Ramsey ♥  
 Rancho Mission Viejo Rodeo ♥  
 Jessie Rees Foundation ♥  
 Tim and Laura Ristoff ♥  
 Mr. and Mrs. Steve Rodosky ♥  
 Debra & William Rohde  
 Mr. and Mrs. Kenneth S. Rohl ♥  
 Roman James Design Build  
 Mary and Emanuel Rosenfeld Foundation ♥  
 Rick and Pam Scholten ♥  
 Mr. Brad Scott ♥  
 Mrs. Elizabeth Segerstrom ♥  
 Mr. and Mrs. Roberto Selva ♥  
 Mr. Hezy Shaked ♥  
 Hillary Helsing and Scott Simon ♥

Laura Lee and Gary Smith ♥  
 The Honorable Sheila Sonenshine  
 and Mr. Ygal Sonenshine ♥  
 Southern California Gas Company  
 Southland Industries  
 Southwest Airlines Charitable Giving  
 Mr. and Mrs. Glenn Stearns ♥  
 Mr. Jeffrey Stibel ♥  
 Stremick Heritage Foods, LLC ♥  
 Tarsadia Foundation ♥  
 Tawa Charitable Foundation  
 Teach A Man To Fish Foundation  
 William & Nancy Thompson  
 Family Foundation ♥  
 Towne Park  
 Toyota Dealer Match Program  
 Alan and Twila True ♥  
 Turtle Rock Preschool  
 UC Irvine Healthcare  
 The Ullem Family ♥  
 Vernon O. Underwood ♥  
 Mr. and Mrs. Jared Vasquez ♥  
 Veg Fresh Farms, LLC  
 W.W. Grainger, Inc  
 Ms. Qi Wang ♥  
 Jean and Tim Weiss ♥  
 Wescom Credit Union  
 Mr. and Mrs. Robert Wilson ♥  
 Xpress Data, Inc  
 Yogurtland Franchising, Inc

### CIRCLE OF LIFE

Donors who have designated  
 CHOC in their estate plans and/or  
 major gift supporters of endowments.

Anonymous (14)  
 Estate of Mary Alice Adams  
 Molly and Sidney Adler, MD  
 Estate of Audrey I. Akeson  
 Estate of Mary Allaben  
 Phil N. Allen Charitable Trust  
 Estate of Viola C. Allen  
 Estate of Bessie Almqvist  
 Estate of Mary C. Altan  
 A-Med Health Care  
 Dr. and Mrs. Nick G. Anas ♥

The Anderson Trust  
 Estate of Jane B. Antrobus  
 Estate of Fay R. Arblaster  
 Maryann and Ray Ardanaz  
 Marjorie B. Ardron Trust  
 Estate of Margaret Rose Armstrong  
 Estate of Robert H. Atherton  
 Estate of Avis C. Atkinson  
 Estate of Augustus Bailey  
 Estate of V. P. Baker  
 Estate of Gladys Balch  
 Ms. Gail Bales  
 Estate of Marjorie A. Ball  
 Elwood & Shirley Banning Trust  
 Ralph G. Beagle Trust  
 Helen Seamon Beal Trust  
 Mary Lee and William H. Beck  
 Dr. and Mrs. Arnold O. Beckman, PhD  
 Tom Beeghly  
 Estate of Arthur Benn  
 Estate of Peter J. Benno  
 Estate of Myrtle Biddle  
 Mr. Richard H. Bigelow  
 Estate of Ivy Birt  
 Helen E. Black  
 Estate of Laura L. Blakey  
 Blue Cross of California  
 Jennie J. Boettgenbach Trust  
 Estate of Albert Boisvert  
 Estate of Peter Bonderoff  
 Estate of Dorothy M. Booth  
 Estate of Louise Bowman  
 The Frank Brackett Trust  
 Estate of Ruth M. Braunger  
 Estate of Beverly K. Brennan  
 Estate of Tracy Brewer  
 Estate of Effie Briggs  
 Estate of Florence Brin  
 Brown Family Revocable Living Trust  
 Estate of Lucille B. Brown  
 Estate of Lucille Brown  
 Esther V. Bruggere  
 Estate of Zorka Bukar  
 Estate of Marilyn Bunyak  
 Estate of Dorothy Virginia Burda  
 George Burgess  
 Wilma V. Burnett

Alice and Maurice Burns  
 Pauline G. Campbell  
 Jack A. Candelori  
 Carl Boschan Trust  
 Estate of John D. Cashman  
 Carol A. and Louis P. Castellana  
 Estate of John and Carol Cazier  
 Estate of Margaret E. Chambers  
 Anthony C. Chang, MD, MBA, MPH ♥  
 Charles G. McGaughey Estate  
 CHOC Padrinos  
 Cinderella Guild  
 Jerry Clark  
 Estate of Jean C. Cleary  
 Coast Iron & Steel Co  
 Jonas Cohen Estate  
 Dolores and Claude Cohn  
 Estate of Edith Colling  
 Ruth V. Combs Trust  
 Estate of Veronica Connors  
 Estate of Margery E. Cook  
 Estate of Ann Cooper  
 Estate of Faith A. Corey  
 Estate of Margaret J. Corkett  
 Estate of Louis Corrado  
 Estate of Ruth Coryell  
 Mr. and Mrs. Andrew J. Cosentino  
 Estate of Doris E. Covelli-Kreitz  
 Estate of Patricia Emison Cox  
 Estate of Maryetta S. Craig  
 Estate of Glenn A. Cramer  
 Kimberly and Glenn Cripe ♥  
 Estate of William W. Curtis  
 Mr. John F. Custance  
 Estate of Clyde L. Dack  
 Estate of Virginia H. Daubenspeck  
 Mrs. Chantelle Davidson  
 Cathy Dayton  
 Mr. Lawrence D. Dearman  
 The Allison Jane Deeley Special Needs Trust  
 Estate of Bruce E. Del Mar  
 Estate of Joan G. DeMarais  
 Estate of Elsie J. Dewey  
 Diane S. Marchetti Memorial Foundation  
 Larry and Kim Dickson  
 Mr. and Mrs. Gregory L. Dorin  
 Estate of Walter D. Douglas, II

## DONORS

May A. Dudley  
Estate of Anne Duffy  
Mary N. Duggans  
Ruth Lillian Dunn Trust  
Eastwood Insurance Services  
Helen J. Ely Trust  
Donald and Ann Emero  
Estate of Bessie I. Emig  
Estate of Thomas Harper Emison  
Kelly and David Emmes  
Estate of Margaret L. Emrick  
Estate of Evan Evans  
Mrs. Sarah Faber  
Alexander Falcone Trust  
Estate of Betty Lou Faust  
Estate of Walter P. Fenimore  
Estate of Mary W. Flippen  
Roy Ford  
Ann Forkey  
Estate of Aida A. Foti  
Anita R. Fox  
The Fox Family Trust  
Jean M. Fox  
Karen and Gary Frailing  
Estate of Corinne Franklin  
Estate of Edwin Freund  
The Estate of Joyce Froot  
Irene and Jack Frost  
Florence Fuller Trust  
Estate of Raymond D. Fuller  
Sharon and Bruce Furniss  
Dr. and Mrs. Stanley Galant  
Estate of Florence J. Gardner  
Estate of Garnet E. Gay  
Estate of James A. Gibbons  
Estate of Lillian Gibson  
Estate of Leslie Gilling  
Estate of Marla S. Gitterman  
Estate of Nancy Ellen Glick  
Estate of Louis Goldstein  
Alta and Willard Greatwood  
Roy C. Green Charitable Trust  
Estate of Frances Lillian Greve  
Estate of Helen Grimes  
Estate of Marie R. Groschan  
Estate of Mildred Hagman  
Estate of Adeline Halter

Trothy Lee Hamann  
Estate of Raymond Hansell  
Estate of Helen George Harding  
Robert E. Harke and Mary R. Harke Family  
Harper Family Trust  
Estate of Matilda Haworth  
Evelyn McFarland Hayden Fund  
Estate of Frances A. Haymond  
Kathleen Hehn  
Eleanor Heitkamp Trust  
The Hersh Living Trust  
Nora and Charles Hester  
Estate of Guy R. Hickey  
Mr. and Mrs. Alex N. Hilkevitch  
Estate of Lewis H. Himmelrich  
Estate of Rosemary Hinko  
Estate of Beryke K Hintzke  
Pearl R. Hoag Trust  
Estate of Magdelene G. Hobson  
Ms. Patricia A. Hofmann  
Bill Holmes ♥♥  
Sophie and Lars Holmquist  
Helen L. Honer Trust  
The Hood Family Trust  
Estate of Dora Hooker Adams  
Estate of Eloise Horn  
Rebecca Hornstein Estate  
Maxine Huber  
Estate of Florence Hullsick  
Judith and Robert Hultine  
Estate of Irma Hunting  
Wendell R. Hurlbut  
Hurt Family Trust  
Estate of Elmer Steward Hurt  
Herbert Isett Trust  
Jack & Jill Guild  
Florence W. Jones  
Mac Cameron Jones  
Howard A. and Shirley V. Jones Family  
Foundation  
Judith and Thomas Kaszer  
Estate of Irene Kaye  
Miriam Kaywood  
Lauren N. Kear  
Estate of Florence Keeley  
Estate of Zoe Ellen Keller  
Dr. and Mrs. L. Frank Kellogg, MD

Estate of Gertrude L. Kelty  
Kent-Detwiler Unitrust  
Kent-Edwards Unitrust  
Kent-Gauchat Unitrust  
Kent-Harper Unitrust  
Kent-McKelvy Unitrust  
Estate of Harvey Kessler  
Estate of Ernest Kessler  
Estate of Elizabeth Jane Kincaid  
Estate of Juanita L. King  
Estate of Hermine W. Kirk  
Estate of Loretta Klyn  
Curtis A. & Varla E. N. Knauss  
Estate of Gayle Knowlden  
Estate of Donald Kocher  
Estate of Janet Koehler  
Koenigsberger Family  
Estate of Katherine L. Korsmeier  
Estate of Nancy Krantz  
Estate of Mary Jo Kratz  
Marianne and Leo Kreter  
Mr. Wilfred L. Landis, II  
Estate of Elizabeth Anne LaRiviere  
Mildred Lawless  
Robert M. and Diana Leaverton Family  
Henrietta and Harold Lee  
Delphine Lee and Ron Ainsworth ♥  
Estate of Elizabeth Leedke  
Esther Leider Living Trust  
Estate of Shirley Baron Levy  
Estate of Pauline G. Lewis  
Estate of Gurl Lindgreen  
James & Martha Lindsey Trust  
Littlest Angel Guild  
Estate of Robert Lobanoff  
The Lockney Family Trust  
Estate of Grace L. Lotz  
Estate of Dorothy F. Lytle  
Estate of Margaret E. MacKenzie  
Estate of Hertha E. MacLachlan  
Anna Lee Mallory Trust  
Estate of Elsie Malone  
Estate of Camille H. Marcan  
Estate of Edith M. Marks  
Clyde A. Martin Trust  
Estate of Lotta Mathison  
Mr. and Mrs. Michael A. Maxsenti

Lillian B. May Charitable Remainder Unitrust  
Mr. and Mrs. John K. Mayberry  
Estate of Horace S. Mazet  
Estate of Jean McArthur  
Kathryn T. McCarty  
Ramsay McCue  
Stew & Vera McDonald Unitrust  
Annie and Martin McDonald  
James L. McKenzie Trust  
Estate of Dwight McKinney  
Estate of Grace McLean  
Cindy & Ron McMackin  
Stephen McPherson Trust  
Estate of William McPherson  
John and Roxie McQuade  
Raymond V. and Ramona W. Merle Trust  
Estate of Rose K. Meyer  
Miles Charitable Unitrust  
Estate of Ruth Miller  
Estate of Doris K. Miller  
Estate of Ruth E. Miller  
Estate of Ronald Miller  
Estate of Florence Miller  
Estate of Arthur Edward Mills  
Minnie W. Myers Estate  
Maria E. Minon, MD ♥  
Estate of Helen May Misevic  
Moore Family Trust  
Darlene M. Moore  
Estate of Dorothy G. Moore  
Russell & Ruth Morgan Trust  
Richard W. Movius ♥  
Muhonen Family ♥  
Estate of Gladys Munoz  
Estate of Lisa Murphy  
Dorothy Ruth Myers  
Estate of Dagmar Nannfeldt  
Viola Navarro Trust  
Estate of Jean Nelson  
Estate of Maxine Nevin  
Clyde F. Newton Trust  
Donald Northwood Trust  
Estate of Corinthia Nye  
Estate of William and Dorsetta O'Donnell  
Estate of Clara Olson  
Louise Oresky Trust  
Estate of Ann Otte

Estate of Mark Lee Diedrich Padgett  
 Estate of Lorraine Parker  
 Jane and John Parker  
 Estate of Grace W. Parsons  
 Estate of Ruth L. Payne  
 Estate of Donalda Adrien Pelletier  
 Mr. Ivan Peltier  
 Estate of Leonard Peruzzi  
 Estate of Venetta J. Petska  
 Piatelli Trust by Lorraine Howell ♥  
 Estate of Dorothy Pinckney  
 Kristine L. Platten  
 Estate of Walter and Aline Portner  
 Estate of Jane Poyer  
 The Robert and Helga Pralle  
 Family Foundation ♥  
 Shelley and Douglas Pricer  
 Estate of Robert L. Protzman  
 Estate of Ruth A. Pruitt  
 Estate of Charles Pumpian  
 Estate of Louis I. Rasmussen  
 The Margaret Austrem Reed Trust  
 Estate of Lorraine C. Reed  
 Debra Reed and Phyllis Schuffler  
 Estate of Renee Rice  
 B. Bradford and Mary W. Richardson Trust  
 Estate of Laura Richardson  
 Estate of Karen A. Richmond  
 Col. Robert and Rose Marie Rick  
 Ridings Family Trust  
 Emma Jane Riley Trust  
 Estate of Marion R. Riley  
 Estate of Edna O. Rinde  
 Jack Rollins Family Trust  
 Carmen and Tanya Rosborough  
 Rothschild Family Foundation  
 Estate of Frederick Rowe  
 Dr. and Mrs. Scott J. Rowen  
 Estate of Rose J. Runyon  
 Helen L. Russell  
 Ruth Reich Trust  
 John and Vicki Sack  
 Margorie B. Salfer  
 Estate of Carl D. Sanborn  
 Jenny Schell  
 Kerri and Andrew Schiller ♥  
 Estate of Louise Schmied

Estate of Natalie H. Schuckmell, M.D.  
 Albert M. Schulten  
 Estate of Victoria Schultz  
 Estate of Lorraine M. Schulz  
 Estate of O. Carl Schulz  
 The Schwartz Family Trust  
 Estate of Frank S. Scott  
 Estate of Catherine A. Scrafield  
 Estate of Sam Joe Sears  
 Christina and Edward Sellers, Jr.  
 Ms. Donna L. Sharkey  
 Mr. and Mrs. Ramon D. Sharp ♥  
 Estate of Martha Ilene Sheff-Schmehl  
 Charlotte B. Shove Trust  
 Gerard Jessie Shuchter Trust  
 Estate of Phyllis L. Sillery  
 Evelyn and David Simon ♥  
 Estate of James Gordon Simpson  
 Mr. and Mrs. Shelly S. Singhal  
 The Slater Trust  
 Tamblin Smith Trust  
 Estate of Helen G. Smith  
 Estate of Lyle S. Smith  
 Evelyn B. Smith  
 Mr. James N. Smith  
 Estate of Halsey H. Soderberg  
 Eugene Sommerhalder Bequest  
 Estate of Jane Sonin  
 Estate of Louise M. Sowder  
 Estate of Marshall Sperry  
 Margaret Lorraine Sprague  
 Dr. Wickliff Stack Trust  
 Raymond Stansbury Family Trust  
 Barbara and Charles Starns  
 Mrs. Jeanette Stein  
 Estate of Cecile Stephens  
 Mrs. Margaret E. Stevens  
 Estate of Esther Stewart  
 Bonnie J. Sullivan  
 Jim and Susan Swenson ♥♥  
 Estate of Luther E. Swink  
 Antonio Thompson Trust Fund  
 Estate of Robert L. Tidwell  
 Margaret M. Tinsman Trust  
 Estate of Rosa P. Togel  
 Frances R. Toman Trust  
 Estate of Betty Toner

Estate of Bruce E. Tricinella  
 Edith and Alfred Trone  
 Estate of Marjorie Trowbridge  
 Mary Adele Trudeau Estate  
 Laura Tucker Unitrust  
 Estate of Dorothy Uehlein  
 Mrs. and Mr. Gloria M. Ullman  
 Mr. Robert U. Ullman  
 Estate of Helene Valle  
 Joseph & Janet Vierling Trust  
 Estate of Harold Vincent  
 Estate of Elisabeth M. Visser  
 Estate of Clifford Vogel  
 Mildred M. Volkel Trust  
 Mr. Gary Voorhest  
 Harold W. Wade  
 Jeanne M. Walker, PhD  
 Mrs. Elizabeth B. Warden  
 Estate of Vivian M. Warinner  
 Estate of Edeltraud M. Webster  
 Estate of Helen Welty  
 Estate of Ethel Wesenberg  
 Fern M. Wessels Trust  
 Grace Whisler  
 Estate of James B. Whitcomb  
 Estate of Geri White  
 Estate of Viola Bea White  
 Estate of William Erick White  
 Paul and Evelyn M. Wickman  
 Wieser Family Trust  
 Estate of Arabella C. Williams  
 Barbara Steele Williams  
 Mr. and Mrs. Max Wills  
 Estate of Margaret Norman Wilson  
 Estate of Carol Ann Wilson  
 Estate of Lucille L. Wilson  
 The Wintrode Family  
 Eric P. Wybrant Irrevocable Trust  
 Mr. and Mrs. David M. Yeager  
 Estate of Mary C. Young  
 Mrs. Sheila C. Zechter  
 Evelyn Zelle Trust

♥ *The Children's Circle of Care recognizes individuals, couples, family foundations and privately-held corporations who make annual qualifying contributions of \$10,000 or more.*  
 ♥♥ *Those who have generously donated \$1,000,000 or more are recognized as Lifetime Members. This program is a North America-wide initiative started by the Woodmark Group, a not-for-profit organization made up of 26 of the most prominent children's hospital foundations in Canada and the United States—including the CHOC Children's Foundation.*

*Please accept our apologies if we have made an error or omission with your name or gift. Please contact the CHOC Children's Foundation at (714) 509-8690.*



**David Dukes—Chair**  
CHOC Children's Orange/  
CHOC Children's at Mission Hospital  
Children's HealthCare of California



**Shruti Miyashiro—Chair**  
CHOC Children's Foundation



**Marshall Rowen, MD—Chair**  
CRC Real Estate Corporation

## CHOC CHILDREN'S ORANGE / CHOC CHILDREN'S AT MISSION HOSPITAL

Senator Dick Ackerman (Ret.)  
Sam Auriemma  
Michael Colglazier  
**Kimberly Cripe – President & CEO**  
Janet Davidson  
Vijay Dhar, M.D.  
**David Dukes – Chair**

Jeff Elghanayan  
Joe Kiani  
Doug McCombs  
Marshall Rowen, M.D.  
**Kimberly Sentovich – Vice Chair**  
Michael Stamos, M.D.  
Thomas Tierney

*Invited Members of Affiliate Boards,  
Administrative & Medical Staff:*  
Marcia Folli – CCMH CNO & Administrator  
**Jay Gabriel – Secretary**  
Matthew Gerlach – EVP/COO  
Ken Kwon, M.D. – CCMH Chief of Staff  
Francois Lalonde, M.D. – CCO President  
of the Medical Staff

Paul Lubinsky, M.D. – President, PSF Board  
Maria Minon, M.D. – CCO, CMO  
Shruti Miyashiro – CCF Board Chair  
Melanie Patterson – COO, CNO  
**Kerri Schiller – SVP & CFO/Assistant Secretary**

## CHOC CHILDREN'S FOUNDATION

Tony Boutelle  
Doug Cavanaugh  
Michael Chao, M.D.  
Annika Chase  
**Kimberly Cripe – President & CEO**  
Lili Daftarian  
Jeff Elghanayan  
Jerry Flannery

Christopher Harrison  
Steve Holley  
Cary Hyden  
**Daniel Hyman – Vice Chair**  
Jason Knight, M.D.  
Gigi Kroll, M.D.  
Delphine Lee  
**Heather Madden – Secretary**

Adrienne Matros, PsyD  
**Shruti Miyashiro – Chair**  
**Chris Rommel – Vice Chair**  
Jon Storbeck  
David Sugden  
David Lee Willis

*Invited Members of Affiliate Boards,  
Administrative & Medical Staff:*  
David Dukes – CCO/CCMH/CHC Chair  
Nicole Hall – Guild Liaison to the Board  
Marshall Rowen, MD – CHC Finance  
Committee Chair  
**Kerri Schiller – SVP & CFO/Assistant Secretary**

## CHOC CHILDREN'S HEALTHCARE OF CALIFORNIA

Sam Auriemma  
**Kimberly Cripe – President & CEO**  
Janet Davidson

**David Dukes – Chair**  
Jeff Elghanayan  
Doug McCombs

**Marshall Rowen, M.D. – Vice Chair**  
Michael Stamos, M.D.  
Thomas Tierney

*Administrative Staff:*  
**Jay Gabriel – Secretary**  
Matthew Gerlach  
**Kerri Schiller – SVP & CFO/Assistant Secretary**

## CRC REAL ESTATE CORPORATION

**Kimberly Cripe – President & CEO**  
**Janet Davidson – Vice Chair**  
Jeff Elghanayan

**Marshall Rowen, M.D. – Chair**  
Patrick Salas

*Administrative Staff:*  
**Jay Gabriel – Secretary**  
Matt Gerlach – EVP/COO

**Kerri Schiller – SVP & CFO/Assistant Secretary**







**CHOC CHILDREN'S HOSPITAL**

1201 W. La Veta Ave.

Orange, CA 92868

714.997.3000

**CHOC CHILDREN'S AT MISSION HOSPITAL**

27700 Medical Center Rd.

Mission Viejo, CA 92691

949.364.1400



CHOC.ORG

Affiliated with  **UCIRVINE** | UNIVERSITY  
of CALIFORNIA