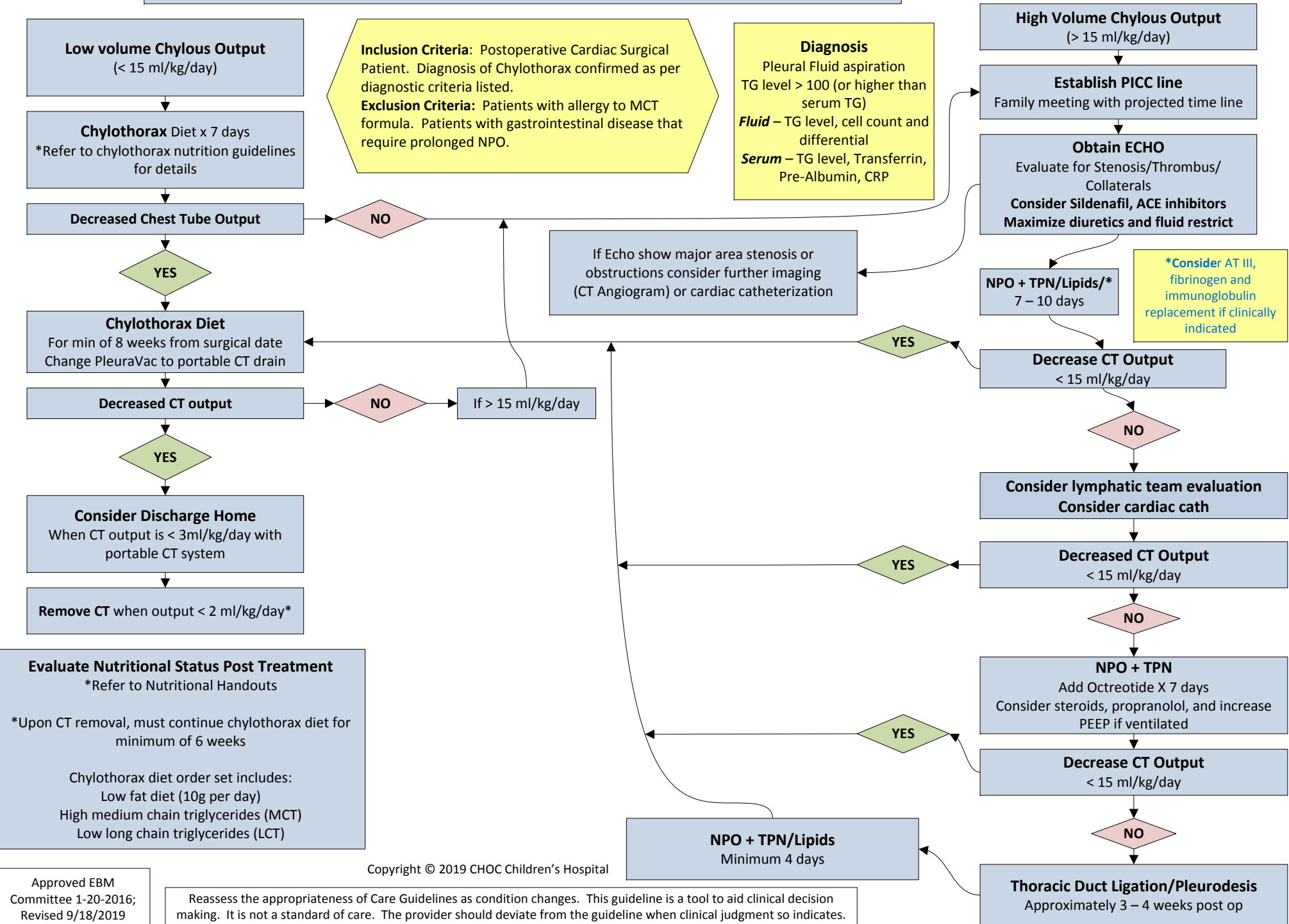


# Post-Operative Chylothorax Management Guidelines for the CVICU



## References for Chylothorax Guideline

- Chan EH, Russell JL, Williams WG, Van Arsdell GS, Coles JG, McCrindle BW. Postoperative chylothorax after cardiothoracic surgery in children. *Ann Thorac Surg.* 2005; 80(5):1864-1870. doi:10.1016/j.athoracsur.2005.04.048.
- Hoskote AU, Ramaiah RN, Cale CM, Hartley JC, Brown KL. Role of immunoglobulin supplementation for secondary immunodeficiency associated with chylothorax after pediatric cardiothoracic surgery. *Pediatr Crit Care Med.* 2012;13(5):535-541. doi:10.1097/PCC.0b013e318241793d.
- Mery CM, Moffett BS, Khan MS, Zhang W, Guzman-Pruneda FA, Fraser CD, Cabrera AG. Incidence and treatment of chylothorax after cardiac surgery in children: Analysis of a large multi-institution database. *J Thorac Cardiovasc Surg.* 2014;147(2): 678-686 e1; discussion 685-686. doi:10.1016/j.jtcvs.2013.09.068.
- Milonakis M, Chatzis, AC, Giannopoulos, NM, Contrafouris, C, Bobos, D, Kirvassilis GV, Sarris GE. Etiology and management of chylothorax following pediatric heart surgery. *J Card Surg.* 2009; 24: 369-373. doi:10.1111/j.1540-8191.2008.00781.x
- Savla JJ, Itkin MI, Rossano JW, Dori Y. Post-operative chylothorax in patients with congenital heart disease. *J Am Coll Cardiol.* 2017; 69(19):2410-2422. doi:10.1016/j.jacc.2017.03.021.
- White SC, Seckeler MD, McCulloch MA, Buck ML, Hoke TR, Haizlip JA. Patients with single ventricle anatomy may respond better to octreotide therapy for chylothorax after congenital heart surgery. *J Card Surg.* 2014;29:259-264. doi:10.1111/jocs.12263.
- Yeh J, Brown ER, Kellogg KA, Donohue JE, Yu S, Gaies MG, Fifer CG, Hirsch JC, Aiyagari R. Utility of a clinical practice guideline in treatment of chylothorax in the postoperative congenital heart patient. *Ann Thorac Surg.* 2013;96(3):930-936. doi:10.1016/j.athoracsur.2013.05.058.